

# The Galilee



BANANA ISLAND



# The Galilee

*A well designed 20 floors apartment block, comprising of 3-bedroom flats, 4-bedroom maisonettes with two (2) maid rooms, and crowned with two (2) units of 5-bedroom penthouses with two (2) maid rooms.*

*Beyond the elegant design & private cinema for each of the maisonettes/penthouses, this project comes complete with luxury outdoor living spaces that will be as comfortable & stylish as the inside living room. The Galilee Duplexes is aimed at giving residents the opportunity to celebrate family life to its fullest.*

*The lush greenery, ample multi-level car parks, and breath-taking views; reflects the elegant lifestyle promised by the development.*



# Unrivaled Luxury

**Dare to be different..**

Reward yourself for your hardworking  
and enjoy all the good attention.

"Remember the Mona Lisa  
doesn't belong in a basement"  
*milk it for what it's worth..*



BANANA  
ISLAND

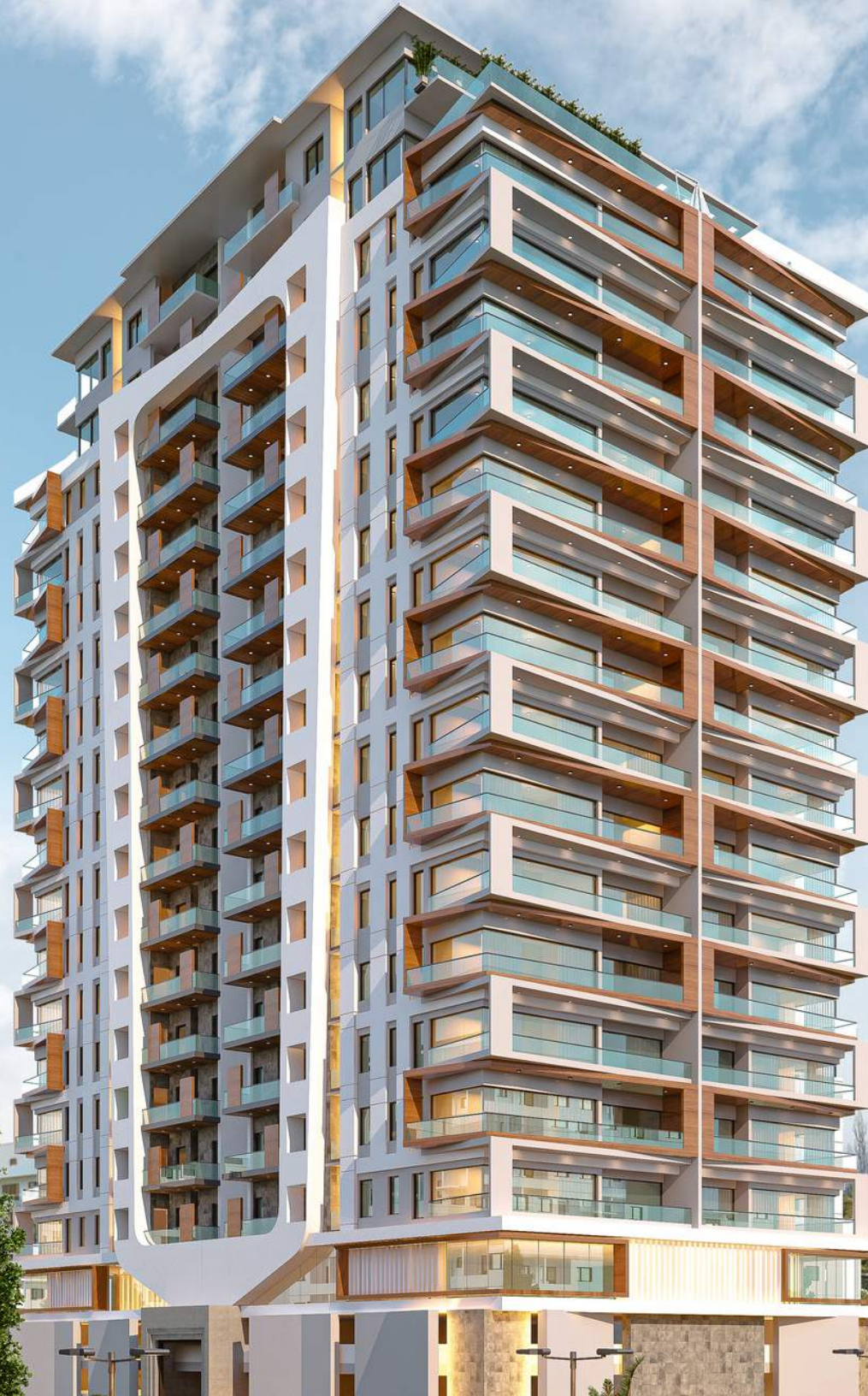
# Site Location



KWARA STREET, BANANA ISLAND



BANANA ISLAND



# *The Galilee*

- ✓ 360 degrees view of Banana Island
- ✓ A higher quality home experience

# AMENITIES AND FACILITIES



INFINITY SWIMMING POOL



GYMNASIUM



PRIVATE CINEMA/UNIT



MOTION SENSOR



HOME AUTOMATION



CENTRAL AIR-CONDITIONERS



CENTRAL WATER HEATER



24/7 POWER SUPPLY



24/7 SECURITY



CONCIERGE SERVICES



POOL BAR & CAFE



PHARMACY/MINI MART



FACILITY MANAGEMENT OFFICE



MULTI-LEVEL CAR PARK [3 CARS/UNIT]



BANANA ISLAND





The airy light-filled lobby with concierge and valet services which will be available 24/7, is one of the many "first" you'll experience as you're welcomed into The Galilee Duplexes.



Well crafted spaces/highly practical floor plan with floor to ceiling windows that allows natural light. The living room is graced by a curvy suspended stairs looking into the dining area. A sweeping 30 square meters balcony that opens to an amazing view of Banana Island and the Ikoyi neighborhood.



Powered by highly rated appliances from MIELE Germany; you are assured a wonderful cooking experience in this spacious beautifully designed kitchen with well arranged cabinets, and beautifully spread island. It comes complete with white polished marble countertop by Bulhaup Germany.



Exclusive home cinema designed to reproduce the movie theater experience and mood right in your home.



The splendor through the panorama windows  
and the beautiful view will definitely put  
everything in perspective.  
Just prepare to be impressed.



Bedroom

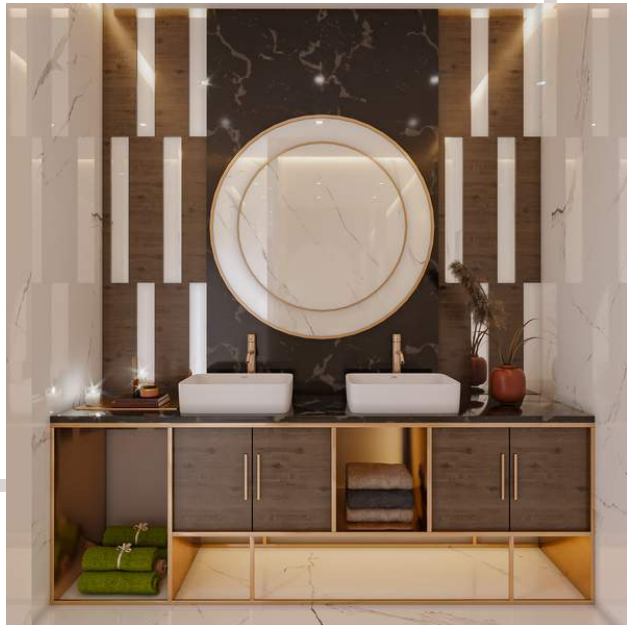


*The Galilee*



*Perfect Retreat*

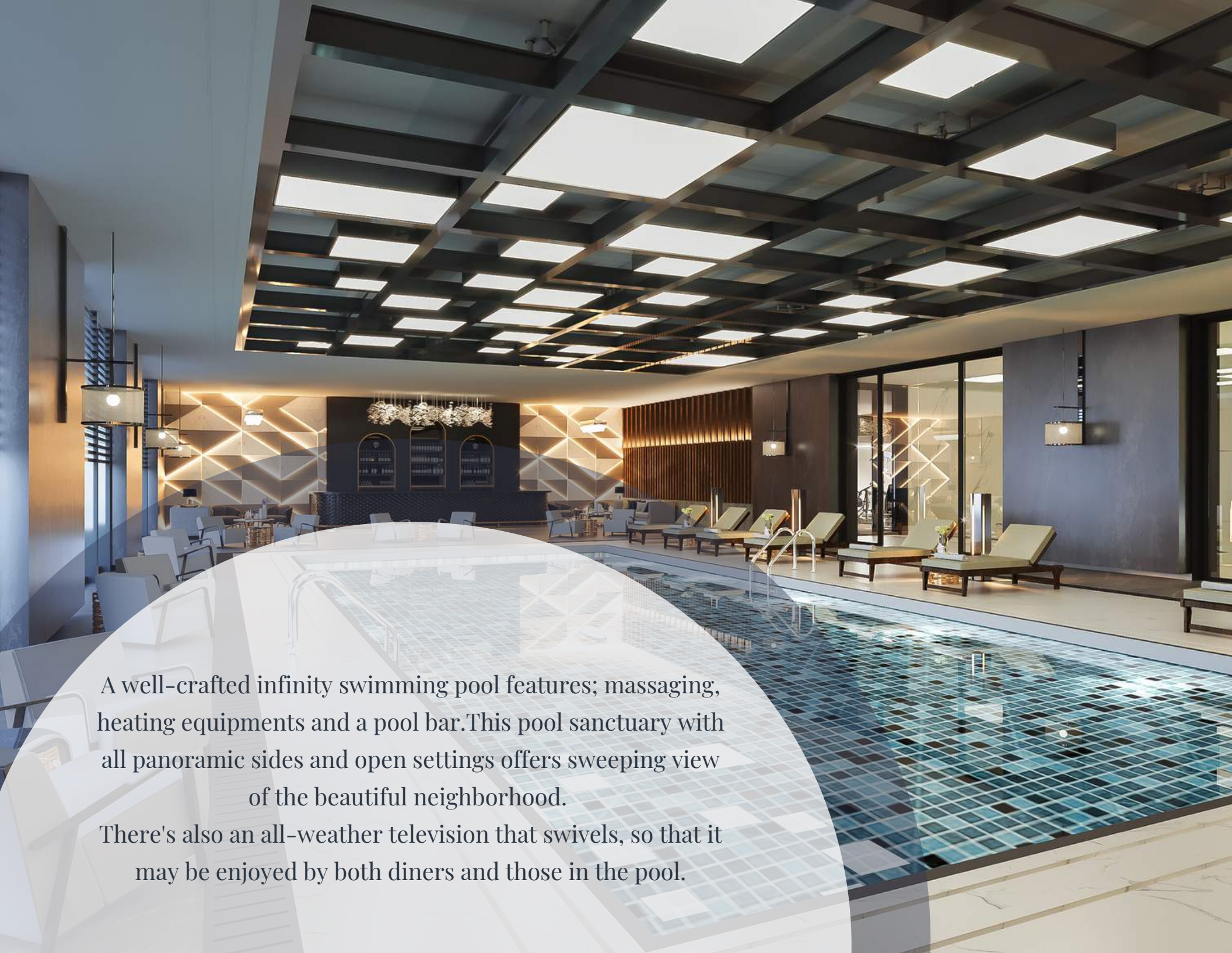
Bath



*Comfort & Class*

Bath



A large, modern indoor swimming pool with a geometric, grid-like ceiling. The pool is surrounded by lounge chairs and a bar area. The pool deck is tiled with a blue and white geometric pattern. The background features a lounge area with tables and chairs, and a bar area with a decorative wall.

A well-crafted infinity swimming pool features; massaging, heating equipments and a pool bar. This pool sanctuary with all panoramic sides and open settings offers sweeping view of the beautiful neighborhood.

There's also an all-weather television that swivels, so that it may be enjoyed by both diners and those in the pool.



Well-equipped gym with state-of-the-art equipment is available to all residents 24/7 with an access key card. The facility is well spacious, well structured, and properly organized to accommodate a lot of users at same time.

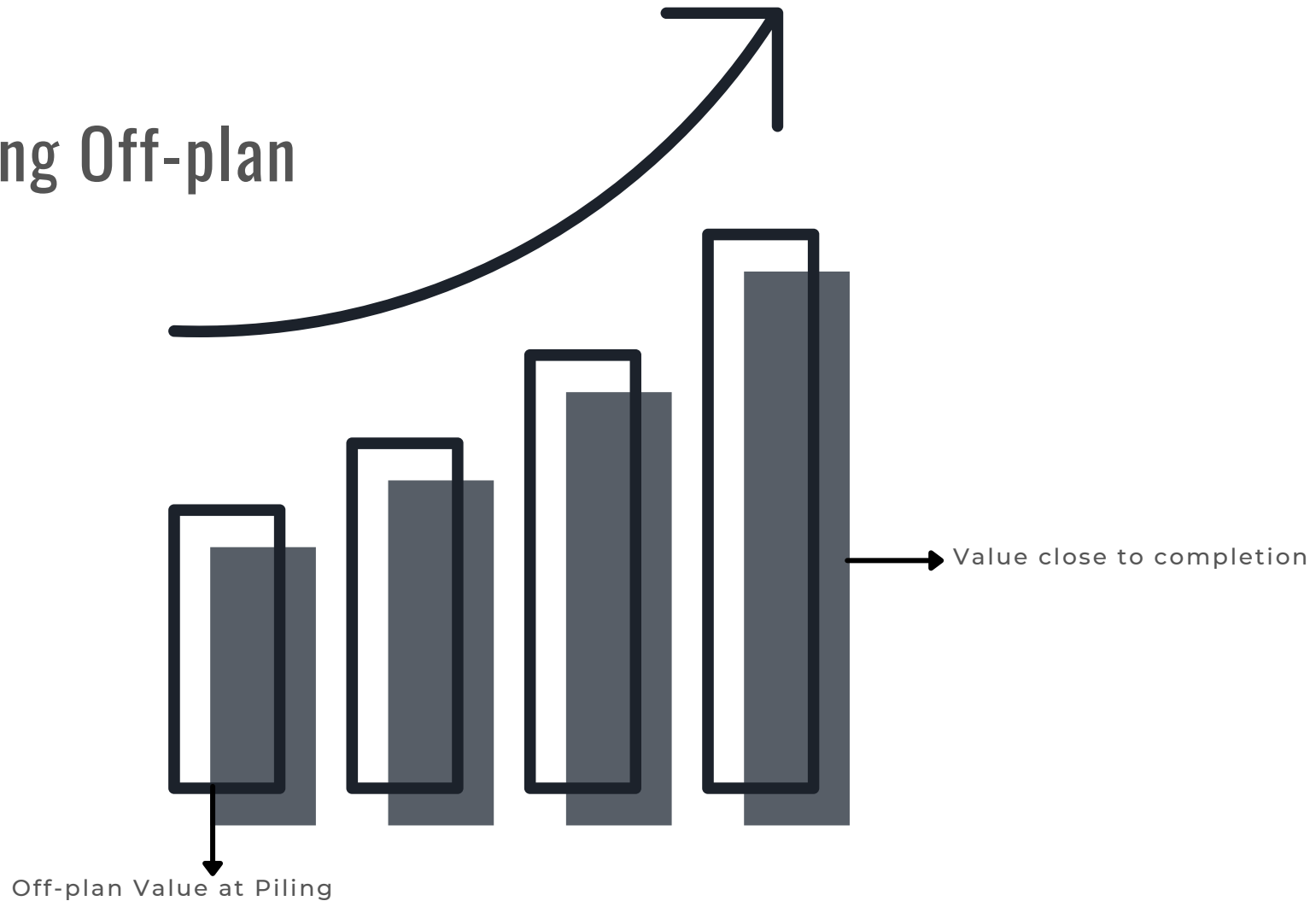
A complete Home  
makes a happy Home



BANANA  
ISLAND



# Buying Off-plan



**“Purchase prices are significantly lower than the average while you can attain strong Capital growth or even resell at a Profit before completion.”**

- ✓ “High returns and Capital growth are two key attributes to be considered when Buying an off-plan for Investment.”
- ✓ “Gives the opportunity to buy the property with Convenient deposits and Staged payments.”
- ✓ You can have an input into the central decor and general fittings.”



# FLOOR LAYOUT

APARTMENT

Each apartment has a contemporary & sophisticated feel, and best for LUXURY in budget

Whichever unit you select at The Galilee, recognize that you are joining an exclusive community of residents

Welcome to serenity

## 3 Bedroom Apartments (Type A)

Total Floor Area - 266 Sqm



### 3 Bedroom apartment (Type A)

Ante Rm	9 sqm
Living Room/Dining	54 sqm
Terrace	18 sqm
Kitchen	25 sqm
Terrace	8 sqm
Store	3 sqm
Maid's Room	8 sqm
Master's Bedroom	25 sqm
Bath	5 sqm
Bedroom 2	18 sqm
Bath	4 sqm
Bedroom 3	23 sqm
Bath	4 sqm
External Area	266 sqm

Total Floor Area - 266 Sqm per unit

### 3 Bedroom Apartments (Type B)

Total Floor Area - 268 Sqm



#### 3 Bedroom apartment (Type B)

Ante Rm	9 sqm
Living Room/Dining	54 sqm
Terrace	19 sqm
Kitchen	25 sqm
Terrace	8 sqm
Store	3 sqm
Maid's Room	8 sqm
Master's Bedroom	25 sqm
Bath	5 sqm
Bedroom 2	18 sqm
Bath	4 sqm
Bedroom 3	23 sqm
Bath	4 sqm
External Area	268 sqm

Total Floor Area - 268 Sqm per unit

# FLOOR LAYOUT

MAISONNETTE

Each maisonette has a contemporary & sophisticated feel, and best for LUXURY in budget

Whichever unit you select at The Galilee, recognize that you are joining an exclusive community of residents

Welcome to serenity

## 4 Bedroom Maisonette

Maisonette First Floor Plan



### 4 Bedroom Maisonette (First Floor)

Ante Rm	13 sqm
Living Room/Dining	84 sqm
Kitchen & Laundry	34 sqm
Terrace	9 sqm
Store	3 sqm
Maid's Room 1	11 sqm
Bath	3 sqm
Maid's Room 2	11 sqm
Bath	3 sqm
Bedroom 1	25 sqm
Bath	4 sqm
Terrace	18 sqm
<b>External Area</b>	<b>266 sqm</b>

Total Floor Area - 266 Sqm per unit

## 4 Bedroom Maisonette

Maisonette Second Floor Plan



### 4 Bedroom Maisonette (Second Floor)

Family Lounge	31 sqm
Master's Bedroom	38 sqm
Closet	22 sqm
Bathroom	6 sqm
Terrace	19 sqm
Cinema	21 sqm
Bedroom 2	24 sqm
Bath	5 sqm
Bedroom 3	21 sqm
Bath	5 sqm
<b>External Area</b>	<b>278 sqm</b>

Total Floor Area - 278 Sqm per unit

# FLOOR LAYOUT

PENTHOUSE

Each penthouse has a contemporary & sophisticated feel, and best for LUXURY in budget

Whichever unit you select at The Galilee, recognize that you are joining an exclusive community of residents

Welcome to serenity

Pent Floor Plan

5 Bedroom Penthouse - First Floor



Total Floor Area: 1,171 sqm | No. of Units per Floor - 2units

Pent Floor Plan

5 Bedroom Penthouse - Second Floor



Total Floor Area: 784 sqm

No. of Units per Floor - 2units

## 5 Bedroom Penthouse

### First Floor Plan

#### 5 Bedroom Penthouse (First Floor)

Ante Rm	15 sqm
Living Room/Dining	101 sqm
Kitchen	33 sqm
Terrace	9 sqm
Store	6 sqm
Maid's Room 1	11 sqm
Bath	3 sqm
Maid's Room 2	11 sqm
Bath	3 sqm
Bedroom 1	27 sqm
Bath	4 sqm
Game Room	28 sqm
Open terrace	221 sqm
<b>External Area</b>	<b>535 sqm</b>



Floor Area - 535 Sqm per Unit

Total Units per Floor - 2units

## 5 Bedroom Penthouse

### Second Floor Plan



#### 5 Bedroom Penthouse (Second Floor)

Family Lounge	47 sqm
Master's Bedroom	36 sqm
Closet	22 sqm
Bathroom	10 sqm
Terrace	70 sqm
Cinema	20 sqm
Bedroom 2	27 sqm
Bath	5 sqm
Bedroom 3	21 sqm
Bath	5 sqm
Bedroom 4	24 sqm
Bath	5 sqm
External Area	364 sqm

Floor Area - 364 Sqm per Unit

Total Units per Floor - 2units

# OUR PROFILE

---



# LAGOS

OFF PLAN HOMES

*Lagos Offplan Homes provides consulting and marketing services aimed at bringing the finest LUXURY PROJECTS developed by the best Real Estate Companies to the most PRESTIGIOUS CLIENTELE in the world.*

*Utilising advanced technology and top-end marketing, Lagos OffPlan Homes provides the best experience when it comes to Buying and Selling Off-Plan Projects. The ability of clients to engage with the site progress is one of the key features of our seamless platform.*